

**Continental**   
The Future in Motion



**Boost your mileage**  
**Keep your energy**

Continental Solid Tires

**PLUS**  
COMPOUND



Solid tires with a leading edge	03
The Continental Plus Compound	04
SC20+	06
CS20+	08
SH12+	10
CSEasy SC20+	12
SC11, CSE-Robust, Continental LifeCycle™	14
MH20, MC20 & ContiPT18	15
Clean tires (Non Marking)	16
Conductive tires	17
Dimensions	18
Environment	22

## Solid tires with a leading edge

More than 145 years of experience and worldwide production and development sites make Continental a leading manufacturer of tires. Our range comprises a large spectrum of high-quality products for virtually every kind of mobility, from racing tires as light as a feather up to the heaviest special tires for extreme conditions.

One field that we have particular expertise in thanks to more than 50 years of experience, is the solid tire segment. And many ideas that revolutionized the market originated from our development division. One example is the Snap-In-Tire system, which has become an industry standard.

Nevertheless, tires only represent 30% of our sales, for Continental is much more than a tire producer. We see ourselves as more than just an expert in terms of tires, but also as an expert concerning driving dynamics. Our customer orientation is our driving motivation for the production of cross-ply, radial, V.ply as well as solid-rubber tires. This enables us to offer each of our customers exactly the right tire to meet their requirements.

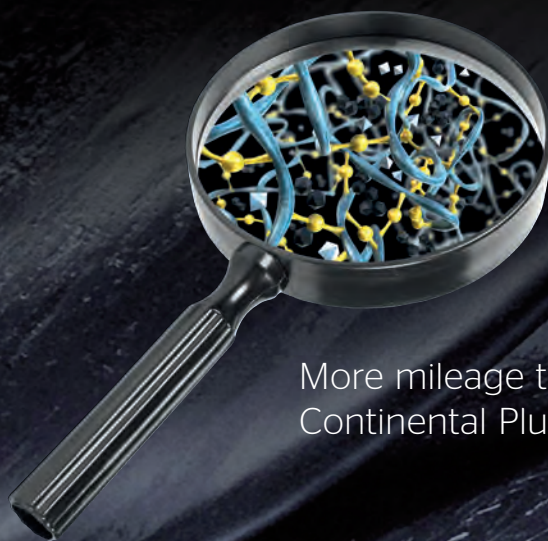
An example for these are our new solid tires: the Plus series. They are based on a specially developed complex material technology that allows an application on smooth floors of warehouses as well as on abrasive surfaces outdoors. The focus of the development was placed on the connection of high mileage and excellent cut resistance while offering a very low rolling resistance.

No matter how particular your requirements may be, you will find the suitable Continental solid tire on the following pages.

# Continental Plus Compound. The superior technology of the new Continental Solid Tires.

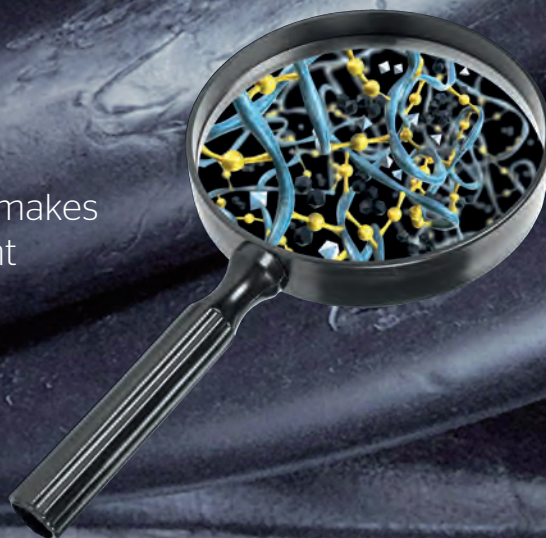
Shorter cycle times, increasing cost pressure, accompanied by new environmental and safety provisions - the framing conditions of the industry are becoming more complex year after year. Our new solid tires emerged as a response to these.

Our engineers focused on two crucial factors during their development: A once more extended service life with simultaneously lower rolling resistance. They managed to combine these two requirements without compromise in one tire technology. This was made possible by the newly developed Continental Plus Compound, which is based on a selection of high-quality raw materials and a complex finishing process.



More mileage thanks to the new  
Continental Plus Compound

Silica acts as a crack stopper and makes  
the compound even more resistant



**Continental Plus Compound.**  
**The solid tire compound for the 21st century**

The utilized rubber compound is the critical quality factor especially for solid tires. The goal of our new development was to generate a polymer-matrix with as many short-chained sulfur connections as possible. The sulfur serves as adhesive between polymer chains and makes the rubber elastic on one side and robust on the other. In this matrix, additionally stabilizing firm components are embedded to reduce wear as well as silica to stop cracks. The result is an even more durable and cut-resistant rubber compound. At the same time, the stability of this rubber mixture ensures that the tires crack less, minimizing the interior temperature build-up and the connected rolling resistance.

**Raw materials of the highest quality**

The main component of our rubber compound continues to be natural rubber. For it alone exhibits a wealth of crucial properties that no synthetic product can offer. As is the case with all natural products, the quality of natural rubber is subject to fluctuations, which are influenced by factors such as climate conditions, cultivation and harvest, as well

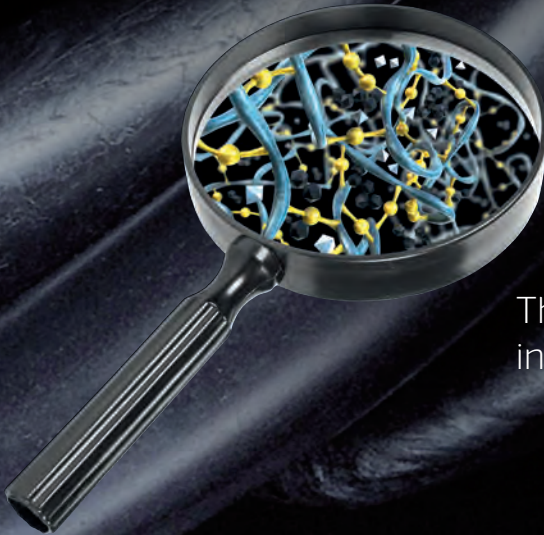
as the processing techniques. Thanks to our decades of experience, our close contact to suppliers of raw materials and our large procurement volume, we are in a position to access the best materials the world market has to offer.

**Optimized vulcanization procedure**

Vulcanization, the process, by which means the mixture of raw materials transforms into finished tires, is highly complex. Even in a tire prior to vulcanization that weighs several hundred kilos, minor temperature fluctuations during the processing can have a negative impact on the final product's quality.

That is why we tailored our vulcanization process specifically to the requirements of solid tires. In addition to the targeted mixing of raw materials and precise temperature management throughout the entire production, this also includes the article-specific heating times, which positively affect the rolling resistance of the finished tire.

This system alone allows a product to be manufactured that meets our quality requirements.



The lower heat development in the tire increases the energy efficiency

The new Continental solid tires enable greater mileage\*, are outstandingly robust and at the same time extremely energy efficient.



# SC20+ The Great Performer

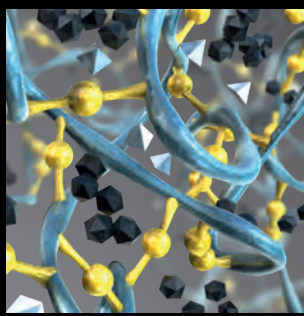
Based on its level of resilience, the new SC20+ offers enhanced mileage and is available in a large selection of different dimensions for virtually all applications. Its unique profile design is based on the special combination of linear grooves and large blocks.

The numerous grip edges simultaneously enable excellent traction on any surface, be it in an indoor or outdoor application. Due to its exceptional cut resistance, the Continental Plus Compound does not only deliver superb reliability, but also enables a very low rolling resistance thanks to its low heat development and thus excellent energy efficiency.

The SC20+ is the universal tire for virtually all surfaces in the indoor and outdoor application.

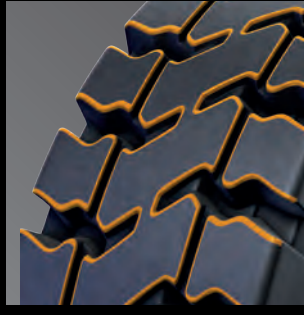


- The SC20+ combines the best of two worlds: Outstanding mileage with optimal energy efficiency



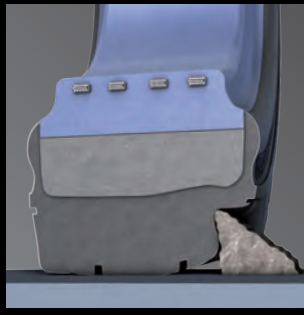
**Exceptional mileage with best energy efficiency**

Very good abrasion behavior thanks to the Continental Plus Compound with up to 20% higher mileage\* on severe, abrasive surfaces with low rolling resistance at the same time



**Excellent traction**

Tried and tested profile with large, individual profile blocks and pronounced linear grooves deliver excellent traction



**High durability**

Optimized compound thanks to short-chained sulfur components  
Optimized silica portion for the highest level of resistance against cracking and chunking



\*compared to SC20 Energy+



# CS20+ The Comfortable Specialist

The CS20 has always been an extraordinary solid tire; By means of the new Continental Plus Compound, it becomes even better in the shape of CS20+. Its unique double-L profile with closed shoulders ensures not only an exceptionally precise steering- and cornering behavior, but also minimizes vibrations at the same time for excellent driving comfort.

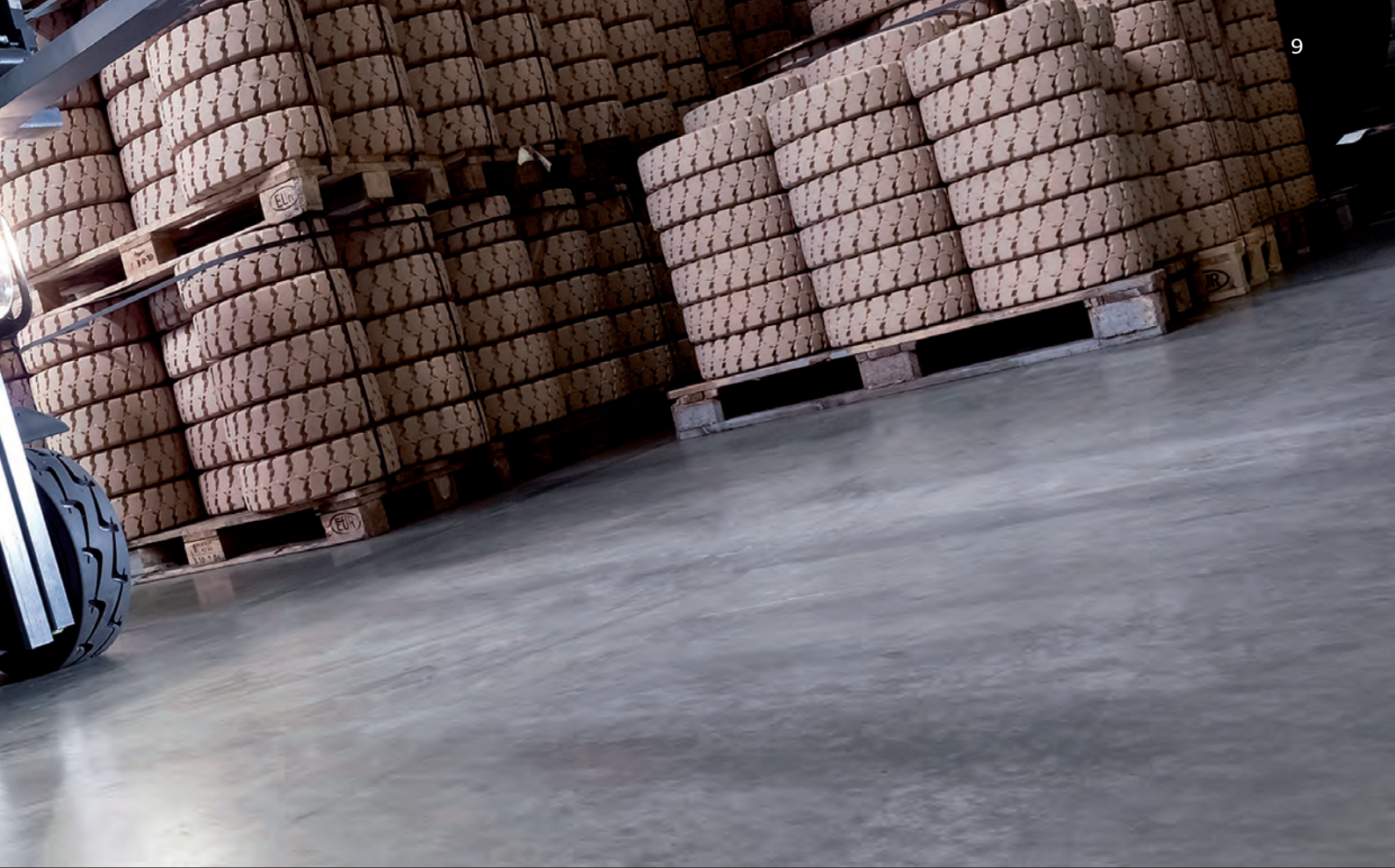
With the introduction of the new Continental Plus Compound the CS20+ delivers improved mileage of up to 20%\*, as well as an increased resistance to damage via cut and chip. The rolling resistance values are maintained therefore continuing to ensure a leading performance in energy efficiency and thermal endurance.

The CS20+ is an agile tire for use on smooth, severe surfaces.



- High comfort due to significantly reduced vibrations
- Enhanced mileage and durability compared to the CS20

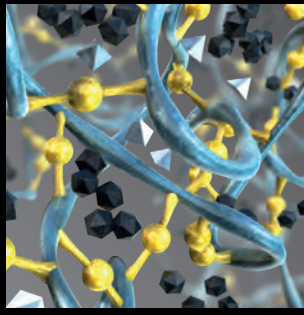




**Highest steering precision**  
The closed shoulder design allows a fast and direct steering response



**Excellent cornering stability**  
A wide shoulder rib instead of individual tread blocks ensures continuous contact between tire and ground surface therefore preventing vibration and noise development for a smooth ride and overall driver comfort



**Exceptional mileage**  
Up to 20% more mileage\* on severe abrasive ground/floor surfaces and increased damage resistance  
Outstanding endurance thanks to the Continental Plus Compound



\*compared to predecessor

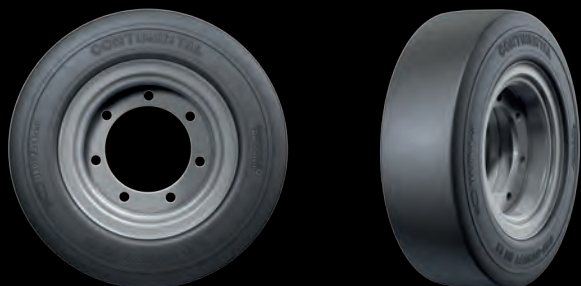


# SH12+ The Smooth Runner

The SH12+ impresses with its characteristic slick profile. With its closed shoulders, maximum contact area and the Continental Plus Compound, it offers excellent driving comfort through its smooth ride and low vibrations, exceptional mileage and great protection against damages.

As the Continental Plus Compound is extremely effective at minimizing the heat development on the inside in addition to its resilience, the rolling resistance and the connected energy consumption of the SH12 is also delightfully low.

The SH12+ is a specialized slick tire, primarily for indoor use on severe and smooth surfaces.

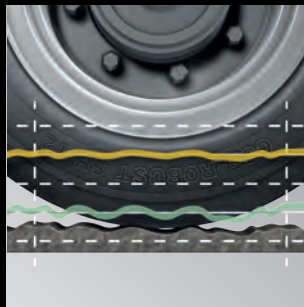


- The problem solver for special applications
- Even more resistant compared to its predecessor SH12



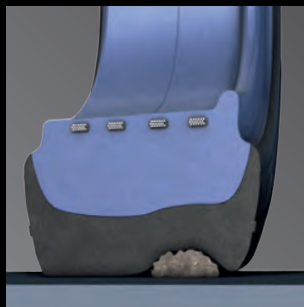
**Excellent driving comfort**

Low vibrations thanks to the slick design enable an exceptionally smooth performance



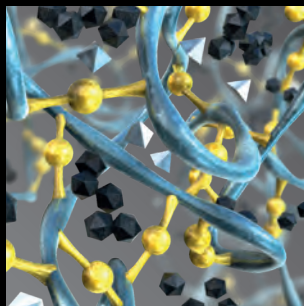
**Very good resistance against damage**

The slick design leads to an increased damage resistance and excellent reliability due to less tread edges compared to profiled pattern



**Exceptional mileage**

Up to 20% higher mileage\* on severe, abrasive surfaces



\*compared to predecessor

# CSEasy SC20+

With the unique mounting, you benefit two-fold. For one, it makes you independent from mounting presses and external services. This is made possible by the CSEasy adapter, which can be loosened with a simple Allen key. Compared to conventional solid tires, the adapter ensures a significantly more secure rim seating and simultaneously prevents the tires from twisting on the rim.

And the brilliant adapter has a further advantage: The CSEasy SC20+ tire heats up significantly less. Even under the toughest stresses, the tire remains measurably cooler and is thereby significantly more durable compared to conventional solid tires.

Two advantages that impress: Combined with the unique adapter system, the new Continental Plus Compound lends the CSEasy SC20+ the highest level of resilience against all types of damages, low abrasion for excellent durability and a reduced rolling resistance for outstanding energy efficiency. And should a tire change come up, the downtime is reduced to a minimum.

The CSEasy SC20+ is the nearly indestructible tire for all surfaces in the indoor and outdoor application.



- Adapter system for easy installation
- Up to 20% more mileage compared to the predecessor CSEasy SC20



## The Durable One



### Highest user friendliness

Quick tire changes by means of independence from external mounting services and thus minimal down- and idle times

### Exceptional durability

The Continental Plus Compound combined with the CSEasy adapter leads to a low heat development in the tire interior and thus a high mileage

### Energy efficient

The low heat development in the tire interior simultaneously also leads to an excellently low rolling resistance





# Super Elastics

## SC11



The SC11 impresses with its closed cap not only thanks to its great driving stability but also due to its exceptionally high mileage with low rolling resistance.

In addition, its characteristic design results in an extraordinarily precise steering behavior and excellently transfers its cornering force.

- Product properties**
- High mileage
  - Low vibrations
  - Superb driving comfort
  - High driving stability
  - Excellent transmission of lateral forces

## CSE-Robust



Compact, robust, versatile. The ideal tire for use on small tractors and trailers.

Despite its small dimensions, the CSE Robust offers everything you expect of a Continental solid tire: exceptional protection against cut and puncture damages, great mileage and low rolling resistance.

- Product properties**
- Good traction
  - Good cornering forces
  - Great safety for small tractors and trailers

## Continental LifeCycle™



There are things that are too valuable to dispose of. These include the solid tires of Continental. In order to enable a second life for these high-quality tires, we developed Continental LifeCycle™:

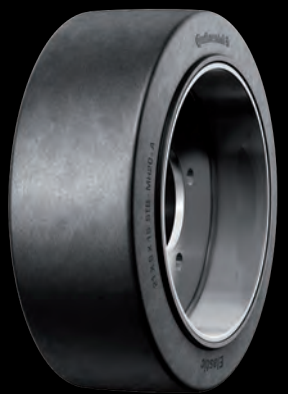
An intelligent combination of high quality, low price and a significant contribution to our environmental footprint.

- Product properties**
- Environmentally friendly and affordable
  - Saves raw materials and energy during production
  - Low priced alternative without sacrificing on quality
  - Especially suited for light to medium loads



# Press On Bands

## MH20



By means of a structure specifically attuned to bearing loads, the MH20 enables the transport of heavy loads with simultaneously small wheel sizes.

Thus it is the first choice for vehicles that need to transport heavy loads with low room heights. Furthermore, its rubber compound provides a high mileage and at the same time an excellent cut resistance with very low rolling resistance.

**Product properties**

---

- Great bearing load
- High mileage
- Robust construction
- High tilt stability
- Low rolling resistance

## MC20



The MC20 builds on the MH 20. The main difference are the massive profile blocks that deliver a great level of traction. Furthermore, its rubber compound supports a very high mileage performance and at the same time an excellent cut resistance with low rolling resistance.

This is the tire for transporting heavy loads across nearly all surfaces. Thanks to its compact design, even low ceiling and clearing heights are no problem.

**Product properties**

---

- High tilt stability
- Great bearing load
- Low rolling resistance
- Robust construction
- Excellent traction

## ContiPT18



The ContiPT18 transmits high drive forces like a super elastic tire and combines these with the load capacity of press on bands.

In addition to excellent traction, its special profile also provides an increased mileage and superb cut resistance with simultaneously low rolling resistance.

**Product properties**

---

- High tilt stability
- Great load capacity
- Low rolling resistance
- Robust construction
- Exceptional traction
- Excellent transmission of lateral forces



# The Clean Ones (Non-marking)



We developed our Clean Tires for areas that are sensitive to dust and dirt. These can already be recognized at a first glance thanks to their characteristically light coloured rubber compound. They reduce visible tire marks on the floor and thus soiling of the production and storage areas.

**Frequent application areas**

- › Automotive industry
- › Food and beverages
- › Computer and electronics
- › Paper
- › Solar industry
- › Optical and opto-electronic industry
- › Chemicals and pharmaceuticals
- › Aviation and aeronautics

The following products are available as a clean version:

**Super Elastic Tires**

- SC20
- CS20
- CSEasy
- SH12
- SC11
- CSERobust

**Press on Bands**

- MH20
- MC20
- ContiPT18



## The Conductive Ones



Every vehicle charges electrically while driving, as conventional tires are practically not conductive. This is normally not a problem, yet in some sensitive application areas, uncontrolled electric discharges may cause sparks. That is why we have developed especially conductive versions of our Super Elastic Tires SC20 and MH20, which prevent static charging.

### Frequent application areas

- › Computer & electronics
- › Solar industry
- › Optical & opto-electronic industry
- › Chemicals and pharmaceuticals
- › Oil & gas industry
- › Aviation & aeronautic tires

The following products are available in a conductive version:

### Super Elastic Tires

SC20

MH20

# Dimensions

## Super Elastics

Dimension		Wheel type	SC20+	CS20+	CSEasy SC20+	SH12+	CSE-Robust	SC10	SC11	SC15	LifeCycle
<b>4"</b>											
3.00 - 4		M	○	○	○	○	●	○	○	○	○
4.00 - 4		M	○	○	○	○	○	●	○	○	○
<b>6"</b>											
140/55-6 /4.50		M/S	○	○	○	○	○	○	○	●	○
<b>8"</b>											
125/75 - 8/3.00	15X4 1/2-8	S	●	○	●	○	○	○	●	○	○
		SIT	●	●	○	●	○	○	●	○	●
15 X 4 1/2 - 8		S	○	○	○	○	○	○	●	○	○
		SIT	○	○	○	○	○	○	●	○	○
150/75 - 8/4.33	16X6-8	S	●	○	●	○	○	○	○	○	○
		SIT	●	●	○	○	○	○	○	○	●
180/70 - 8/4.33		S	○	○	○	●	○	○	●	○	○
		SIT	○	○	○	●	○	○	●	○	○
180/70 - 8/4.33	18X7-8	S	●	○	●	○	○	○	○	○	○
		SIT	●	●	○	○	○	○	○	○	●
4.00 - 8/3.00		S	●	○	○	○	○	○	○	○	○
		SIT	●	●	○	○	○	○	○	○	○
5.00 - 8/3.00		S	●	○	●	○	○	○	○	○	●
		SIT	●	○	○	○	○	○	○	○	●
<b>9"</b>											
140/55 - 9/4.00		SIT	●	●	○	○	○	○	●	○	●
200/75 - 9/6.00	21X8-9	S	●	○	●	○	○	○	○	○	○
		SIT	●	○	○	○	○	○	●	○	●
6.00 - 9/4.00		S	●	○	●	○	○	○	●	○	●
		SIT	●	●	○	○	○	○	○	○	●
<b>10"</b>											
180/60 - 10/5.00		S	○	○	●	○	○	○	○	○	○
		SIT	●	●	○	●	○	○	○	○	○
200/50 - 10/6.50		S	○	○	●	○	○	○	○	○	○
		SIT	●	●	○	●	○	○	○	○	●
225/75 - 10/6.50	23X9-10	S	●	○	●	○	○	○	○	○	○
		SIT	●	●	○	○	○	○	○	○	●
6.50 - 10/5.00		S	●	○	●	○	○	○	○	○	●
		SIT	●	●	○	○	○	○	○	○	●
<b>12"</b>											
250/60 - 12/8.00	23X10-12	S	○	○	●	○	○	○	○	○	○
		SIT	●	●	○	○	○	○	○	○	●
250/75 - 12/8.00	27X10-12	S	●	○	●	○	○	○	○	○	○
		SIT	●	●	○	○	○	○	○	○	●
315/45 - 12/10.00		SIT	●	●	○	○	○	○	○	○	○
		S	●	○	●	○	○	○	○	○	●
7.00 - 12/5.00		SIT	●	●	○	○	○	○	○	○	●
		S	●	○	○	○	○	○	○	○	○

- Available
- Unavailable

Various dimensions are also available in clean and conductive versions.  
Your sales representative will be glad to advise you.



# Dimensions

## Press on Bands

Dimension	Wheel type	MH20	MC20	
<b>65mm</b>				
105/45 - 65	Z	●	○	
<b>75mm</b>				
125/50 - 75	KM15	●	○	
	Z	●	○	
<b>100mm</b>				
150/50 - 100	KM15	●	○	
	Z	●	○	
160/50 - 100	KM15	●	○	
	Z	●	○	
170/75 - 100	Z	●	●	
200/75 - 100	KM15	●	○	
	Z	●	○	
<b>105mm</b>				
200/85 - 105	KM15	●	○	
	Z	●	○	
<b>120mm</b>				
180/50 - 120	KM15	●	○	
	STB	●	○	
	Z	●	○	
230/75 - 120	Z	●	○	
<b>140mm</b>				
200/50 - 140	KM15	●	○	
	STB	●	○	
	Z	●	○	
250/75 - 140	KM15	●	○	
	STB	●	○	
	Z	●	○	
250/100 - 140	Z	●	○	
250/130 - 140	STB	●	○	
	Z	●	○	
<b>150mm</b>				
200/60 - 150	Z	●	○	
<b>160mm</b>				
265/160 - 160	STB	●	○	
	Z	●	○	
<b>165mm</b>				
254/102 - 165	10X4X6 1/2	STB	●	○
254/127 - 165	10X5X6 1/2	STB	●	○
267/127 - 165	10 1/2X5X6 1/2	STB	●	○
<b>170mm</b>				
230/50 - 170	KM15	●	○	
	STB	●	○	
	Z	●	○	
230/75 - 170	STB	●	○	
250/105 - 170	STB	●	○	
250/60 - 170	KM15	●	○	
	Z	●	○	

Dimension	Wheel type	MH20	MC20	ContiPT18
250/75 - 170	Z	●	○	○
250/80 - 170	STB	●	○	○
	Z	●	○	○
260/60 - 170	KM15	●	○	○
	Z	●	○	○
270/105 - 170	Z	●	○	○
280/75 - 170	KM15	●	○	○
	Z	●	○	○
300/85 - 170	Z	●	○	○
310/100 - 170	Z	●	○	○
<b>190mm</b>				
250/50 - 190	KM15	●	○	○
	Z	●	○	○
250/60 - 190	STB	●	○	○
	Z	●	○	○
250/85 - 190	STB	●	○	○
280/60 - 190	STB	●	○	○
	Z	●	○	○
<b>200mm</b>				
310/75 - 200	KM15	●	○	○
310/120 - 200	KS15/6	●	○	○
310/140 - 200	KS15/6	●	○	○
<b>203mm</b>				
300/90 - 203	Z	●	○	○
300/100 - 203	KM8	●	○	○
	STB	●	○	○
	Z	●	○	○
305/114 - 203	12X4 1/2X8	STB	●	○
330/114 - 203	13X4 1/2X8	STB	●	○
330/127 - 203	13X5X8	STB	○	●
343/140 - 203	13 1/2X5 1/2X8	KS15/6	●	○
	STB	●	●	○
356/114 - 203	14X4 1/2X8	STB	●	●
<b>220mm</b>				
280/50 - 220	STB	●	○	○
	Z	●	○	○
280/75 - 220	KM10	●	○	○
	Z	●	○	○
285/75 - 220	STB	●	○	○
300/50 - 220	KM15	●	○	○
300/75 - 220	KM10	●	○	○
	Z	●	○	○
310/60 - 220	Z	●	○	○
310/120 - 220	Z	●	○	○
<b>254mm</b>				
356/127 - 254	14X5X10	STB	●	○
394/152 - 254	15 1/2X6X10	STB	○	○
<b>267mm</b>				
406/127 - 267	16X5X10 1/2	KS15/6	●	○
	STB	●	●	●
406/152 - 267	16X6X10 1/2	KS15/6	●	○
	STB	●	●	●
406/178 - 267	16X7X10 1/2	KS15/6	●	○
	STB	●	○	○

Dimension	Wheel type	MH20	MC20	ContiPT18	
<b>270mm</b>					
360/60 - 270	KM15	●	○	○	
	STB	●	○	○	
	Z	●	○	○	
360/75 - 270	KM15	●	○	○	
	Z	●	○	○	
360/85 - 270	KM15	●	○	○	
	STB	●	○	○	
	Z	●	○	○	
<b>286mm</b>					
381/127 - 286	15X5X11 1/4	STB	●	●	○
413/127 - 286	16 1/4X5X11 1/4	STB	●	○	○
413/152 - 286	16 1/4X6X11 1/4	STB	●	●	●
413/178 - 286	16 1/4X7X11 1/4	STB	●	●	○
<b>300mm</b>					
450/120 - 300	STB	●	○	○	
<b>305mm</b>					
400/65 - 305	Z	●	○	○	
400/75 - 305	KM15	●	○	○	
	Z	●	○	○	
405/65 - 305	STB	●	○	○	
405/130 - 305	STB	●	○	○	
	Z	●	○	○	
405/260 - 305	STB	●	○	○	
415/75 - 305	STB	●	○	○	
415/90 - 305	STB	●	○	○	
	Z	●	○	○	
415/100 - 305	KM8	●	○	○	
	STB	●	○	○	
	Z	●	○	○	
425/150 - 305	STB	●	○	○	
	Z	●	○	○	
425/260 - 305	STB	●	○	○	
425/300 - 305	STB	●	○	○	
450/300 - 305	STB	●	○	○	
455/100 - 305	Z	●	○	○	
<b>308mm</b>					
457/127 - 308	18X5X12 1/8	STB	●	●	○
457/152 - 308	18X6X12 1/8	STB	●	●	●
457/178 - 308	18X7X12 1/8	KS15/6	●	○	○
	STB	●	●	●	
457/203 - 308	18X8X12 1/8	STB	●	●	●
457/229 - 308	18X9X12 1/8	STB	●	●	○
<b>330mm</b>					
533/229 - 330	21X9X13	KS15/8	●	○	○
<b>370mm</b>					
500/85 - 370	Z	●	○	○	
500/320 - 370	STB	●	○	○	
500/360 - 370	STB	●	○	○	
500/420 - 370	STB	●	○	○	
520/100 - 370	STB	●	○	○	
	Z	●	○	○	
525/100 - 370	Z	●	○	○	
525/120 - 370	Z	●	○	○	

Dimension	Wheel type	MH20	MC20	ContiPT18	
<b>381mm</b>					
533/127 - 381	21X5X15	STB	●	○	○
533/152 - 381	21X6X15	STB	○	●	○
533/178 - 381	21X7X15	STB	●	●	●
533/203 - 381	21X8X15	STB	●	●	●
533/229 - 381	21X9X15	STB	●	○	●
<b>406mm</b>					
559/152 - 406	22X6X16	STB	●	○	○
559/203 - 406	22X8X16	STB	●	●	●
559/229 - 406	22X9X16	STB	●	●	●
559/254 - 406	22X10X16	STB	●	●	○
559/305 - 406	22X12X16	STB	●	○	●
559/356 - 406	22X14X16	STB	●	○	○
559/406 - 406	22X16X16	STB	●	○	○
<b>410mm</b>					
500/65 - 410	STB	●	○	○	
	Z	●	○	○	
540/200 - 410	Z	●	○	○	
550/120 - 410	KM8	●	○	○	
	Z	●	○	○	
550/160 - 410	STB	●	○	○	
	Z	●	○	○	
560/100 - 410	STB	●	○	○	
	Z	●	○	○	
590/120 - 410	Z	●	○	○	
610/150 - 410	STB	●	○	○	
	Z	●	○	○	
620/200 - 410	STB	●	○	○	
	Z	●	○	○	
645/250 - 410	STB	●	○	○	
	Z	●	○	○	
645/300 - 410	STB	●	○	○	
<b>480mm</b>					
620/420 - 480	STB	●	○	○	
645/200 - 480	KS15/8	○	●	○	
	STB	●	○	○	
645/250 - 480	STB	●	○	○	
<b>500mm</b>					
760/250 - 500	STB	●	○	○	
<b>559mm</b>					
711/254 - 559	28X10X22	STB	●	○	○
711/305 - 559	28X12X22	STB	●	●	○
711/356 - 559	28X14X22	STB	●	○	○
711/406 - 559	28X16X22	STB	●	○	○
840/356 - 559	STB	●	○	○	
840/406 - 559	STB	●	○	○	
840/500 - 559	STB	●	○	○	
<b>640mm</b>					
750/75 - 640	Z	●	○	○	
<b>670mm</b>					
920/250 - 670	STB	●	○	○	
920/400 - 670	STB	●	○	○	
<b>762mm</b>					
1016/406 - 762	40X16X30	STB	●	○	○



## Pioneering eco-friendly innovations

Continental works on pioneering renewable resources such as Taraxagum. For this successful initiative, Continental has received the European environment prize "GreenTec Award". The tire manufacturer is also obliged to the European Chemicals Directive REACH that stipulates the Registration, Evaluation, Authorization and Restriction of Chemicals.

Continental Commercial Specialty Tires (CST) continuously invests in the development of sustainable innovations for economically and ecologically efficient mobility. Besides the reduction of fuel and energy consumption, the tire manufacturer focuses on enhancing the tires' performance for an extended lifecycle. Long-lasting tires consume less energy across the entire manufacturing process and in application. In addition, Continental CST strives to utilize the most environmentally friendly raw material sources.

Continental CST will continue to work on enhancing the sustainable performance of its tires so as to make a valuable contribution to the protection of the environment and to a cleaner future.



**Continental Reifen Deutschland GmbH**

Commercial Specialty Tires

Büttnerstraße 25. 30165 Hannover

T. +49 511 938-01

mail\_service@conti.de

www.continental-specialty-tires.com