

Conti Terra HD3 19.5" Off-Road Drive

Applications: Off-road severe service drive position.



Legend:

3G Casing	SmartWay® Verified	Intelligent Tire	Retread Available

PRODUCT FEATURES ABOVE ONLY APPLY TO PRODUCTS IF THE MATCHING ICON IS DARKENED.

Conti Terra HD3

19.5" Off-Road Drive

GOODS PEOPLE CONSTRUCTION



PRODUCT DATA

TIRE SIZE	LOAD RANGE	ARTICLE NUMBER	TREAD DEPTH (32nds)	MAX SPEED (MPH)	STATIC LOADED RADIUS		OVERALL INFLATED DIAMETER		OVERALL INFLATED WIDTH		LOADED SECTION WIDTH		APPROVED RIM(S)	MINIMUM DUAL SPACING		REVS PER UNIT		TIRE WEIGHT		MAX. LOAD @ INFLATION	
					IN	MM	IN	MM	IN	MM	IN	MM		IN	MM	MI	KM	LB	KG	LBS, PSI (KG, KPa)	LBS, PSI (KG, KPa)
225/70R19.5	G	05260080000	19	75	15.4	390	32.3	821	8.6	218	9.4	239	6.00, 6.75	10.0	254	640	398	67	30	3970, 110 (1800, 760)	3750, 110 (1700, 760)
245/70R19.5	H	05260070000	19	75	15.6	395	33.3	845	9.7	245	10.3	262	7.50, 6.75	11.0	279	622	387	82	37	4940, 120 (2240, 830)	4675, 120 (2120, 830)

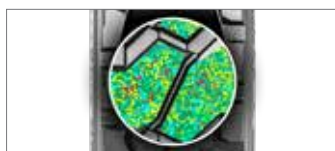
TUBELESS TIRES ON 15 DEGREE DROP CENTER RIMS

Note - Rim listed first is the measuring rim. Minimum Dual Spacing calculated without chains. # - Exceeding the lawful speed limit is neither recommended nor endorsed. Overall widths will change 0.1 inch (2.5 mm) for each 1/4 inch change in rim width. Minimum dual spacing should be adjusted accordingly. Continental Tire the Americas, LLC reserves the right to change product specifications at any time without notice or obligations. Please consult rim manufacturers load and inflation limits. Never exceed rim manufacturers limits without permission of component manufacturer.

Features & Benefits



Aggressive 19/32" open shoulder tread design provides outstanding traction in off road conditions.



Technologically **advanced cut/tear resistant tread compound** to provide long removal miles.



Circumferential protection rib engineered to withstand severe off road terrain.



Scuff rib to protect against curbing, cuts and abrasions.



This product is Mud + Snow Certified.

Applications: Off-road severe service drive position.