

HTR2 17.5" Regional Trailer

Applications: Trailer and pusher positions.

Legend:

| | | | |
|-----------|--------------------|------------------|-------------------|
| | | | |
| 3G Casing | SmartWay® Verified | Intelligent Tire | Retread Available |

PRODUCT FEATURES ABOVE ONLY APPLY TO PRODUCTS IF THE MATCHING ICON IS DARKENED.

HTR2

17.5" Heavy Trailer, Regional

GOODS PEOPLE CONSTRUCTION



PRODUCT DATA



| TIRE SIZE | LOAD RANGE | ARTICLE NUMBER | TREAD DEPTH (32nds) | MAX SPEED (MPH) | STATIC LOADED RADIUS | | OVERALL INFLATED DIAMETER | | OVERALL INFLATED WIDTH | | LOADED SECTION WIDTH | | APPROVED RIM(S) | MINIMUM DUAL SPACING | | REVS PER UNIT | | TIRE WEIGHT | | MAX. LOAD @ INFLATION | |
|-------------|------------|----------------|---------------------|-----------------|----------------------|-----|---------------------------|-----|------------------------|-----|----------------------|-----|-----------------|----------------------|-----|---------------|-----|-------------|----|-----------------------|-----------------------|
| | | | | | IN | MM | IN | MM | IN | MM | IN | MM | | IN | MM | MI | KM | LB | KG | LBS, PSI (KG, KPa) | LBS, PSI (KG, KPa) |
| | | | | | | | | | | | | | | | | | | | | | SINGLE |
| 215/75R17.5 | H | 04920350000 | 16 | 68 | 14.1 | 359 | 30.2 | 767 | 8.3 | 211 | 8.6 | 218 | 6.00, 6.75 | 9.4 | 239 | 688 | 427 | 60 | 27 | 4805, 125 (2180, 860) | 4540, 125 (2060, 860) |
| 235/75R17.5 | H | 04920360000 | 16 | 68 | 14.7 | 373 | 31.4 | 797 | 9.2 | 233 | 9.5 | 242 | 6.75, 7.50 | 10.3 | 262 | 662 | 412 | 72 | 33 | 6005, 125 (2725, 860) | 5675, 125 (2575, 860) |

TUBELESS TIRES ON 15 DEGREE DROP CENTER RIMS

Note - Rim listed first is the measuring rim. ## = Intelligent Tire Article #. Minimum Dual Spacing calculated without chains. # - Exceeding the lawful speed limit is neither recommended nor endorsed. Overall widths will change 0.1 inch (2.5 mm) for each 1/4 inch change in rim width. Minimum dual spacing should be adjusted accordingly. Continental Tire the Americas, LLC reserves the right to change product specifications at any time without notice or obligations. Please consult rim manufacturers load and inflation limits. Never exceed rim manufacturers limits without permission of component manufacturer.

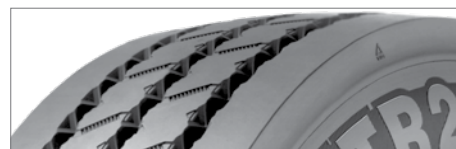
Features & Benefits



Robust tread compound engineered to protect against cutting and chipping.



Innovative groove geometry designed to prevent stone retention and drilling.



Wide tread and shoulder ribs for improved wear and increased scuff resistance.

Also available in **19.5" Tire**

Applications: Trailer and pusher positions.